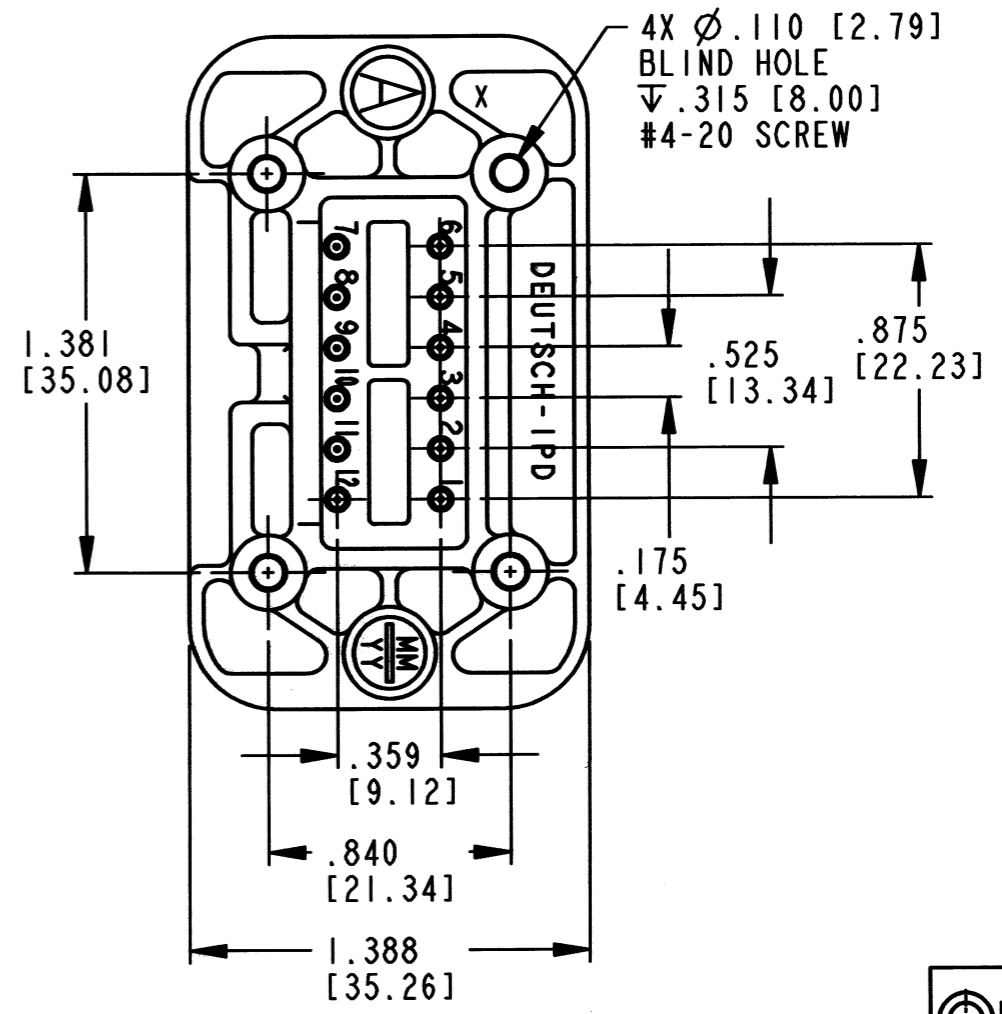
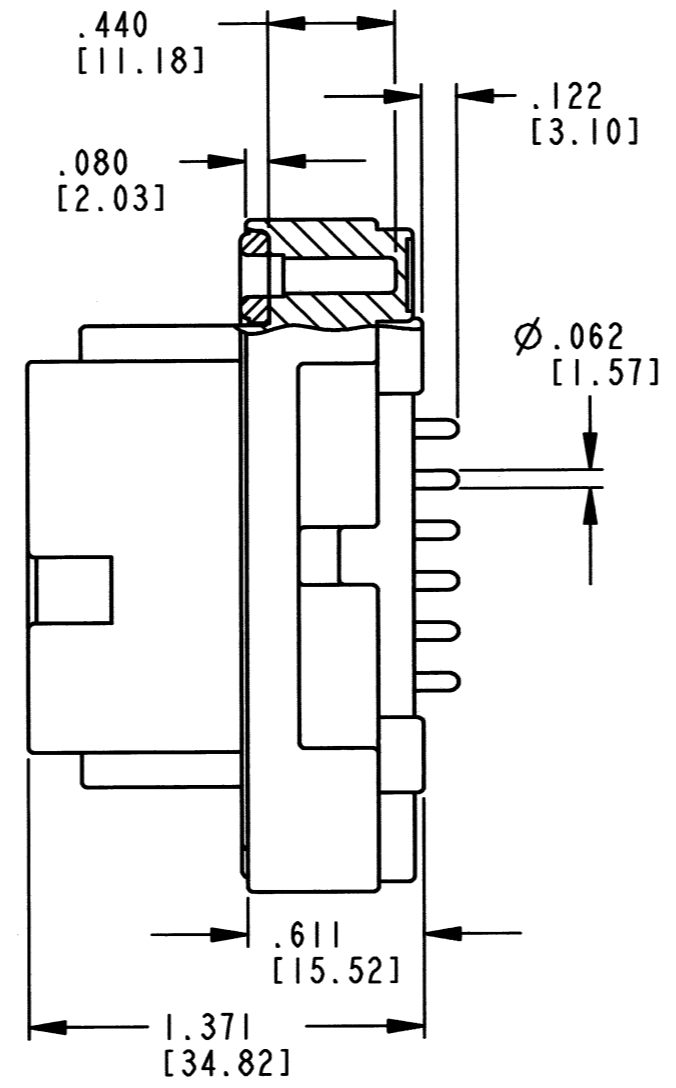
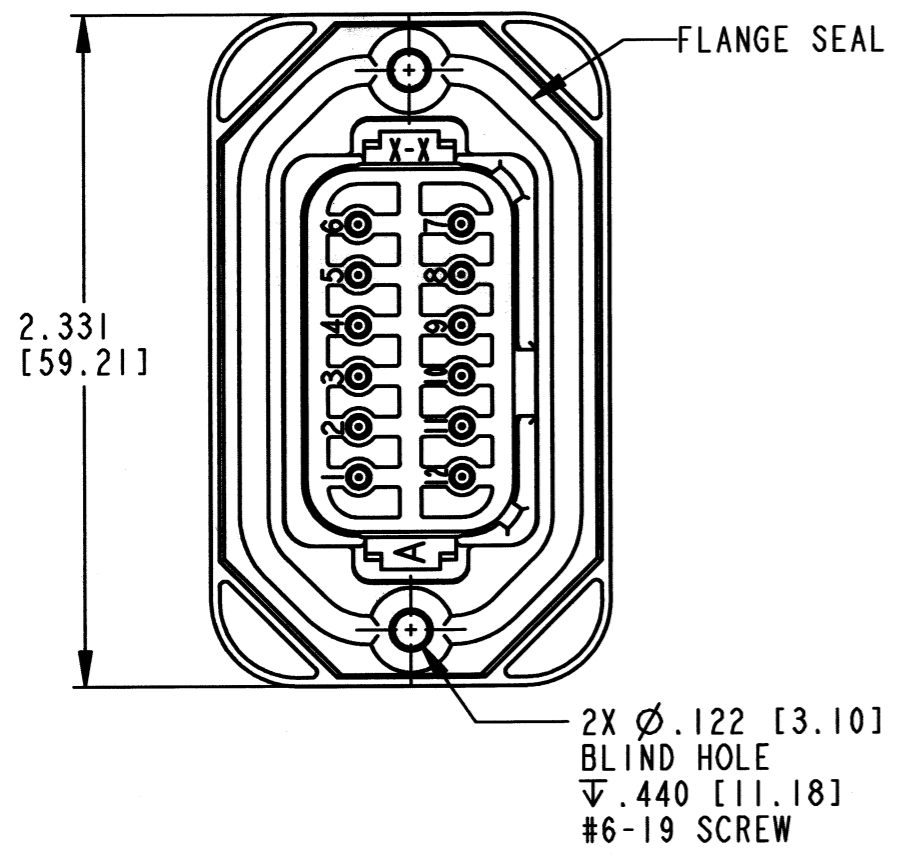
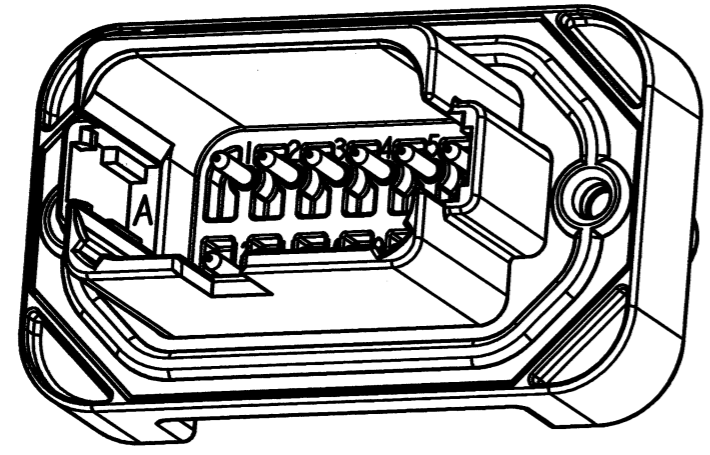


REV
B DT15-12P*-B016

| REVISIONS | | | |
|-----------|-----------------------------|---------|----------|
| SYM | DESCRIPTION | DATE | APPROVED |
| NC | NEW RELEASE PER E.O. P18012 | 1/16/03 | R.D.R. |
| A | REVISED PER E.O. P19187 | 6/22/06 | R.D.R. |
| B | REVISED PER E.O. P21065 | 8-26-11 | ADR |

3D VIEW



6. RECOMMENDED TORQUE VALUES ARE AS FOLLOWS: #6-19 SCREWS: 10-20 IN LB. [1.13-2.26 N m]. #4-20 SCREWS: 6-10 IN LB. [.68-1.13 N m].
5. MOUNTING HOLES WILL ACCEPT CAMCAR PLASTITE SELF THREAD SCREWS (NOT INCLUDED). EXAMPLE: #6-19, #4-20.
4. THIS RECEPTACLE MATES WITH DT06-12S* PLUG -****- ALL MODIFICATIONS
3. SHELL MATERIAL: PLASTIC; FLANGE SEAL MATERIAL: RUBBER.
2. DIMENSION TOLERANCE \pm .025 [.64]. FOR PANEL CUTOUTS \pm .010 [.25].
1. DIMENSIONS SHOWN ARE IN INCHES [MM].

NOTES:

| SIGNATURE & DATE | |
|------------------|---------------------|
| DR | P. BURKE 1/8/03 |
| CHK | B. Byford 8/26/2011 |
| PE | K. Klee 8/15/11 |
| APPD | S. Baum 8/25/11 |
| SCALE | NONE |
| WT | |

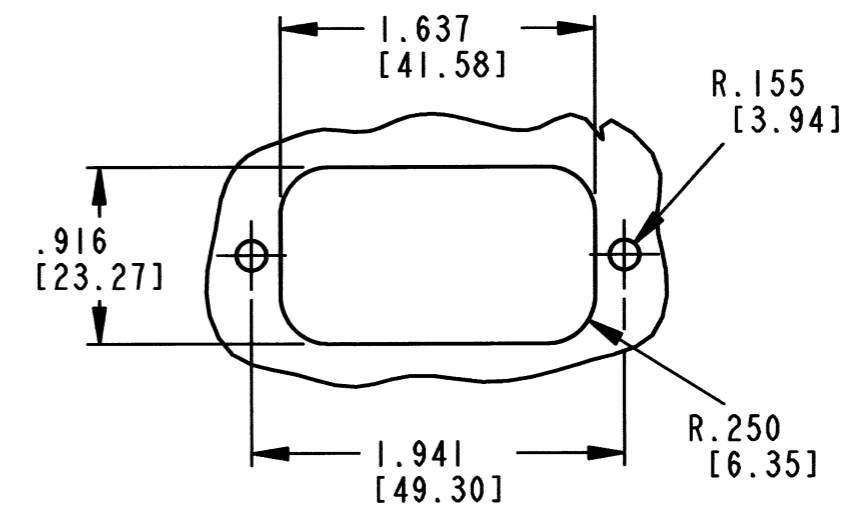
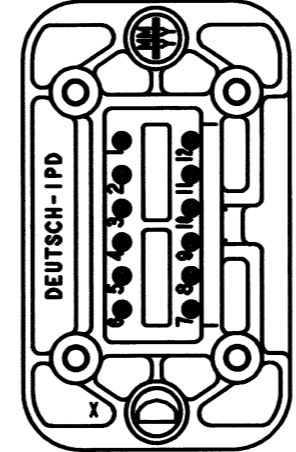
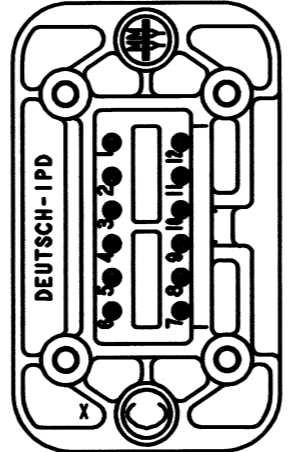
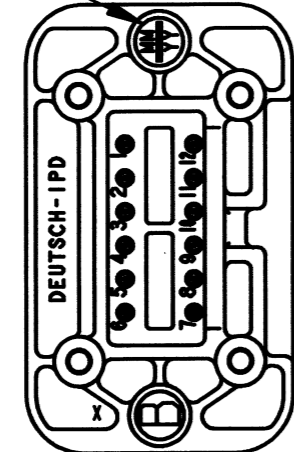
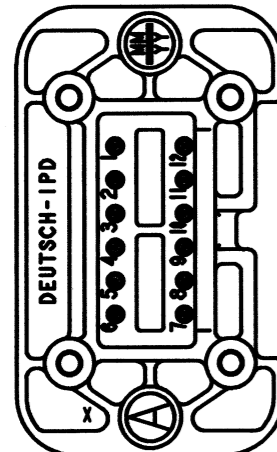
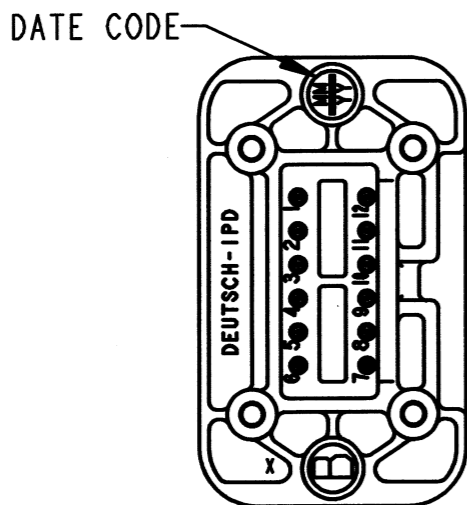
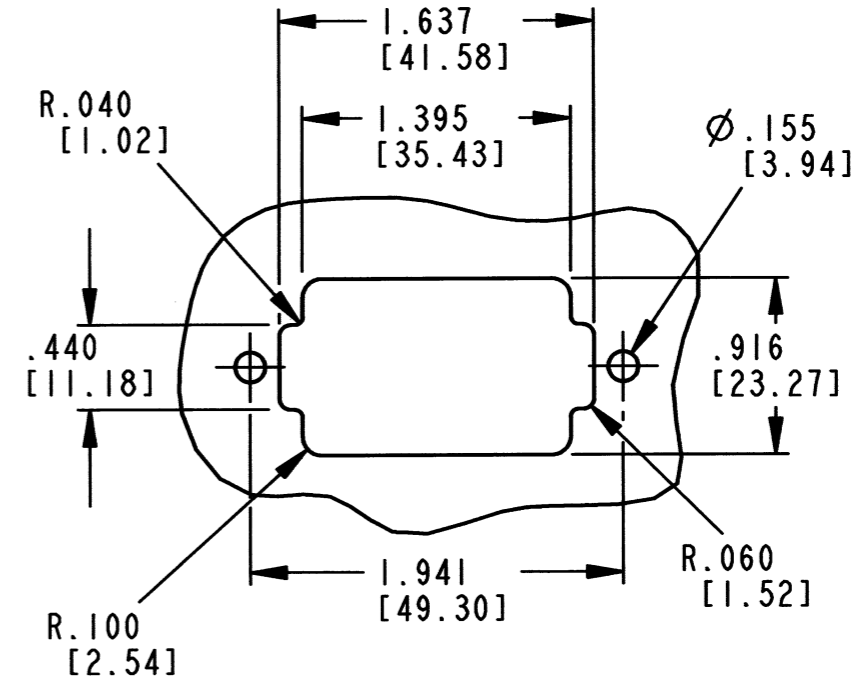
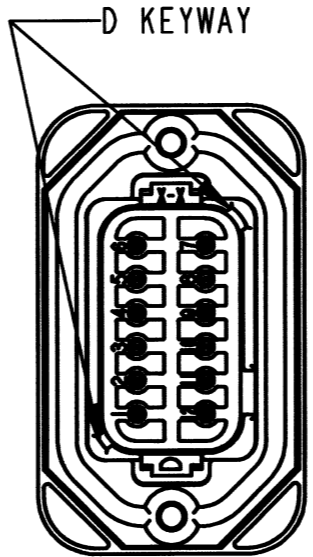
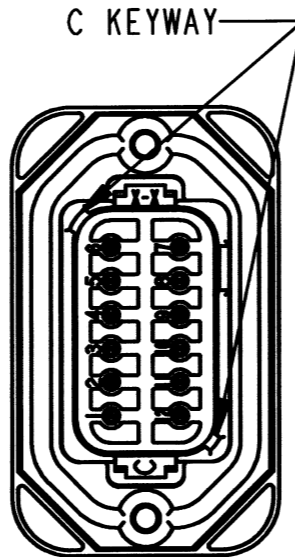
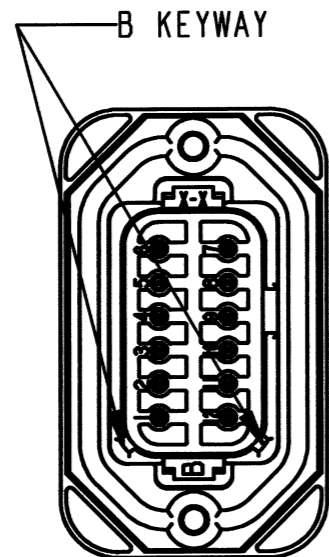
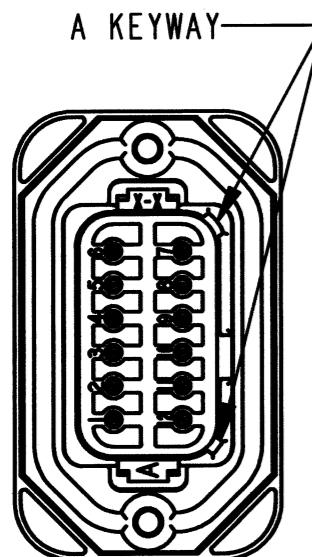
PCB MOUNT RECEPTACLE
12 PIN STRAIGHT TAILS
B016 MOD
DT SERIES

ENVELOPE

| | |
|---|-------------------------|
| EP | MATL. CODE |
| 3850 INDUSTRIAL AVE. HEMET, CA 92545 | |
| B DT15-12P*-B016 | |
| DWG SIZE | CODE 11139 SHEET 1 OF 2 |

REV
B DT15-12P*-B016

| REVISIONS | | | |
|-----------|---------------|---------|----------|
| SYM | DESCRIPTION | DATE | APPROVED |
| B | SEE SHEET ONE | 8-26-11 | ADR |
| | | | |
| | | | |



DT15-12PA-B016
COLOR: GREY

DT15-12PB-B016
COLOR: BLACK

DT15-12PC-B016
COLOR: GREEN

DT15-12PD-B016
COLOR: BROWN

NOTES: SEE SHEET ONE

| SIGNATURE & DATE | |
|------------------|----------------------------|
| DR | P. BURKE 1/18/03 |
| CHK | <i>[Signature]</i> 8/26/11 |
| PE | <i>[Signature]</i> 8/15/11 |
| APPD | <i>[Signature]</i> 8/25/11 |
| SCALE | NONE WT |

PCB MOUNT RECEPTACLE
12 PIN STRAIGHT TAILS
B016 MOD
DT SERIES

ENVELOPE

| | |
|---|-------------------------|
| EP | MATL. CODE |
| 3850 INDUSTRIAL AVE. HEMET, CA 92545 | |
| B | DT15-12P*-B016 |
| DWG SIZE | CODE 11139 SHEET 2 OF 2 |